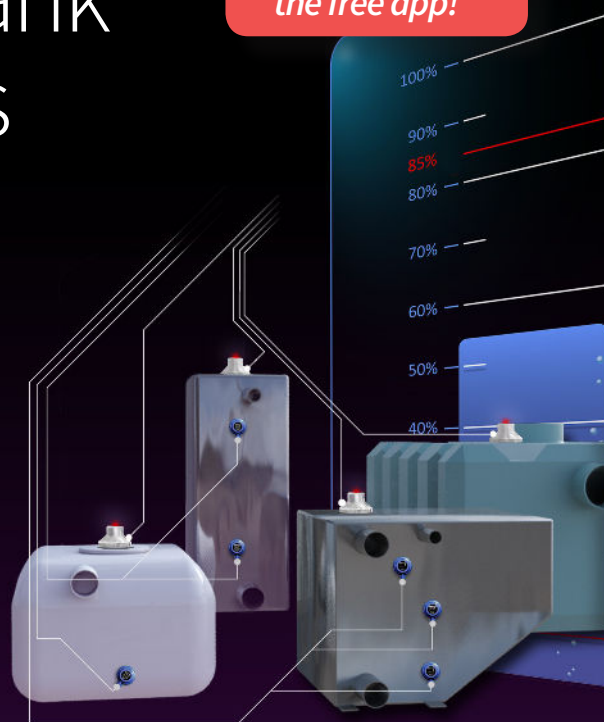




*Please test  
and play with  
the free app!*

# Probably the best tank monitoring systems

We offer unique tank monitoring systems. Our proprietary products are easy to install, use, reliable and contribute to a better environment. Since 2008, we have developed products that measure the liquid level in tanks with waste, fuel and water. Unlike other traditional measuring senders, Gobius products measure from the outside of the tank, which makes them easy to install and very user-friendly.



*Above you also see Gobius Pro, level alarm sensors in blue.*



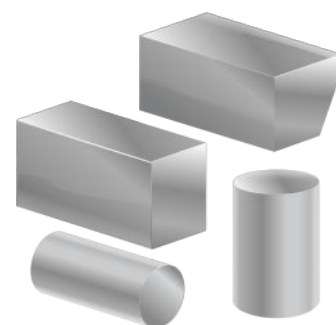
## Choose the one that suits you best

If you want to see your tanks on your NMEA 2000 network, you should choose Gobius C for NMEA 2000.

If you are looking for an easy solution where you only want to see the tank level on a regular analog instrument, choose Basic.

If you need to connect your Gobius to external systems or analog instruments, then choose Gobius C with Analog outputs.

Whatever you choose, you have your tank level in your phone.



## Gobius C vs. Other Tank Monitors on the Market

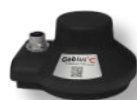
### Gobius C

- Measures from the outside of the tank (metal and plastic tanks)
- Stepless measurement, 2-3 mm accuracy
- Instant showing the correct level and volume
- Reliable, never in contact with the fluid water
- Easy installation with your smart phone (Bluetooth) or PC
- Easy to integrate with control systems and external devices
- Integrated instant support functions

### Other Indicators

- Measure inside the tank
- Never correct measurement
- No tank shape correction
- Unreliable, always in contact with the aggressive fluids
- Indicate often full even if the tank is empty
- Drilling holes are needed
- Always a leakage risk
- No exact stepless measurement





|                        |                                | NMEA 2000                | Analog Outputs           | Basic                    | Remark |
|------------------------|--------------------------------|--------------------------|--------------------------|--------------------------|--------|
| <b>Installation</b>    | Plug and play                  | ✓                        | ✓                        | ✓                        |        |
|                        | Smart phone app                | ✓                        | ✓                        | ✓                        |        |
|                        | Bluetooth                      | ✓                        | ✓                        | ✓                        |        |
|                        |                                |                          |                          |                          |        |
| <b>App</b>             | 10 languages                   | ✓                        | ✓                        | ✓                        |        |
|                        | Gobius View                    | ✓                        | ✓                        | ✓                        | New! * |
|                        | Demo mode                      | ✓                        | ✓                        | ✓                        |        |
|                        |                                |                          |                          |                          |        |
| <b>Integration</b>     | Bluetooth communication with   | ✓                        | ✓                        | ✓                        | New!   |
|                        | Victron Cerbo GX and Ekrano GX | ✓                        | -                        | -                        |        |
|                        | NMEA 2000 network              | -                        | ✓                        | ✓                        |        |
|                        | 0-190 / 240-33 Ohm             | -                        | ✓                        | -                        |        |
|                        | 4-20 mA current loop           | -                        | ✓                        | -                        |        |
|                        | 0-5 Volt                       | -                        | ✓                        | -                        |        |
|                        | 2 alarm levels                 | -                        | ✓                        | ✓                        | **     |
| <b>Technology</b>      | Measurement                    | Micro radar              | Micro radar              | Micro radar              |        |
|                        | Accuracy                       | 2 mm                     | 2 mm                     | 2 mm                     |        |
|                        | Minimum tank depth             | 200 mm                   | 200 mm                   | 200 mm                   |        |
|                        | Maximum tank depth             | 2000 mm                  | 2000 mm                  | 2000 mm                  |        |
|                        | Minimum measurement distance   | 50 mm                    | 50 mm                    | 50 mm                    | ***    |
|                        |                                |                          |                          |                          |        |
| <b>Facts</b>           | Sensor size, h x w             | 65 x 95 mm               | 66 x 95 mm               | 43 x 95 mm               |        |
|                        | Cable length                   | 1 m                      | 1 m                      | 1 m                      |        |
|                        | Material                       | ABS                      | ABS                      | ABS                      |        |
|                        | Weight                         | 115 gram                 | 115 gram                 | 152 gram, incl cable     |        |
|                        | Input voltage, DC              | 12-24 Volt               | 12-24 Volt               | 12-24 Volt               | ****   |
|                        | Power Consumption              | 25 mA                    | 25 mA                    | 25 mA                    |        |
|                        | Water proof                    | IP 66                    | IP 66                    | IP 66                    |        |
|                        |                                |                          |                          |                          |        |
| <b>Fluids</b>          | Water                          | ✓                        | ✓                        | ✓                        |        |
|                        | Diesel, Gasoline & Oil         | ✓                        | ✓                        | ✓                        |        |
|                        | Black, grey, waste             | ✓                        | ✓                        | ✓                        |        |
|                        | Other fluids                   | ✓                        | ✓                        | ✓                        |        |
|                        |                                |                          |                          |                          |        |
| <b>Tank material</b>   | Polythelene                    | ✓                        | ✓                        | ✓                        |        |
|                        | Stainless steel                | With an adapter          | With an adapter          | With an adapter          |        |
|                        | Aluminium                      | With an adapter          | With an adapter          | With an adapter          |        |
|                        | Fiber Glass                    | ✓                        | ✓                        | ✓                        | *****  |
|                        |                                |                          |                          |                          |        |
| <b>Tank geometries</b> | Rectangle                      | ✓                        | ✓                        | ✓                        | *****  |
|                        | Cylinder                       | ✓                        | ✓                        | ✓                        | *****  |
|                        | None rectangular               | ✓                        | ✓                        | ✓                        | *****  |
|                        |                                |                          |                          |                          |        |
| <b>Prices</b>          |                                | Please visit our website | Please visit our website | Please visit our website |        |

\* Share and view tank data on multiple phones  
 \*\* Above, Below, On and Off  
 \*\*\* Minimum distance from sensor to fluid surface for reliable measurement

\*\*\*\* Min. 9 V and max. 28 V  
 \*\*\*\*\* Adapter must be used if wall thickness is more than 10 mm  
 \*\*\*\*\* Free Tank Calculator in the app

**Please visit our website to find your local distributor/reseller!**



Manufacturer: Gobius Sensor Technology AB  
 Slätthultsvägen 11, SE-474 31 Ellös, Sweden  
 info@gobius.se  
 gobiusc.com

**Gobius®**  
 'C' the Exact Tank Level